



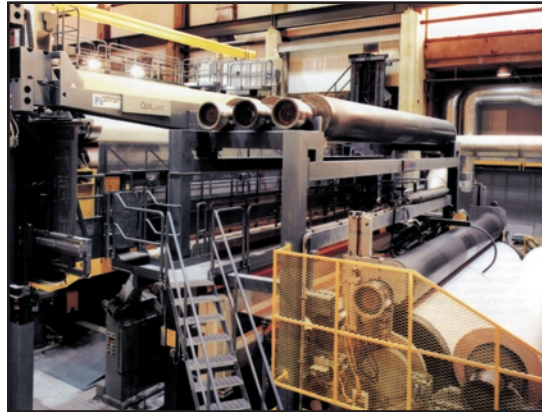
# The Duckbill Reel Slabber

Reduce costs of reel spool refinishing and resurfacing.

**The proper reel slabber** prolongs reel spool in-service between surface maintenance and repairs.



*The Duckbill Reel Slabber takes its name from the proprietary duckbill contour on the leading edge of the tool. The impact resistant engineered plastic tool incorporates a purpose-built design to slice, lift and separate unsellable paper from the reel spool without damage to the machined finish of the spool.*



*Your reel spools are built to fit your machine. You need them all and you don't keep a lot of spares on hand.*

## The Benefits: Economy, Ergonomics, Efficiency

**Steel bladed utility knives can do a lot. But they can't do it all.**

Steel-bladed utility knives are an essential tool in a paper mill, but there are some applications where they are out of place. One of those places is running against the machined finish of the reel spools at the end of your machine. Sure, the ubiquitous utility knife makes all kinds of sense for slabbing off the bulk of the unsellable paper from the spool when it comes back from the unwinder or finishing room. But when it comes to removing the last inch or so of paper from the spool, the Duckbill Reel Slabber works best – **it's cheaper, safer and more economical**

**It's not in the grip. It's in the push.**

Ergonomically, the human arm can assume only a limited number of simultaneous functions and do them well. When the muscles in the hand and wrist are instructed to grip, longitudinal arm strength is compromised. An over-tight gripping action also compromises accuracy, sensitivity, speed and **productivity.**

**Productivity is the only option. Avoidable fatigue is not an option.**

True, this reel spool slabber is a small thing. Your mill won't survive or fail because you did or didn't use the Duckbill Tool. But that's not to say that the right tool designed for a specific job won't help improve worker efficiency and productivity. And **reduce hand and arm fatigue.** In sum your valuable, trained and knowledgeable work force is equipped for the task, they're a little more cautious and a little more alert.



*An operator or machine tender can't do this job without the right tools. Of course, a utility knife is one of those essential tools (Note the scoring and scratching on the surface of the reel spool). But the wrong tool running on the surface of custom-built reel spools that are machined and finished to fit your machine is an unnecessary cost that is easy to avoid.*



*The distinctive Duckbill contour on the leading edge of the tool is accompanied by a slight flare. In combination, the proprietary design serves to slice, then lift and separate the unsellable paper remaining on the reel spool. What's more, because the reject paper falls off the reel in sheaves, rather than large slabs, it's easier and safer to transfer to the broke pit or conveyor.*



*The ergonomic shape at the heel of the Duckbill Reel Slabber nests in the palm of the users hand. The result is a "grip-less" posture which happily does not sap arm strength yet it further reduces the fatigue and stress which can impair productivity throughout the day.*

## SPECIFICATIONS

### Materials of construction:

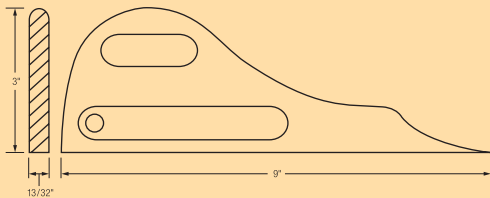
A high molecular weight, high temperature engineered thermoplastic compound reinforced with glass fiber.

### Characteristics:

- Heat resistant to 480°F and thermally stable.
- Water and humidity resistant.
- Resists most non-aggressive chemicals.

### Dimensions:

Length: 9"  
Height: 3"  
Width: 13/32"



## FEATURES

- Proprietary "Duckbill" tool nose
- Engineered thermoplastic construction
- Ergonomic tool heel
- Flared tip can be trimmed to fit personal preferences

## BENEFITS

- Won't score expensive reel shaft surfaces
- Promotes optimum "slice, lift and separate" action
- Won't fray, splinter or deteriorate from friction
- Minimizes cuts, slices and stab type personnel injuries
- Promotes longitudinal pushing posture (a better solution than pulling)
- Leverages user arm strength
- Reduces operator fatigue

**Duckbill.**  
**Crafted for Comfort.**  
**Designed for Duty.**  
**Built for you.™**



Duckbill is a world leader in engineered SPMM™ (Single Platform: Many Modules) concepts. These are task-specific, mostly upper-body, ergonomically-sound personal carrying solutions that can be equipped with an array of customized modules for carrying and positioning (or re-positioning) interchangeable hand tool, instrument and device modules. The Duckbill SPMM™ product is a professional grade, rugged and ergonomically sound tool carrying platform. It integrates AXIAlign™ Power Zone Design (PZD)™ principles to keep the user as erect as possible throughout the work day and reduce the number of bending, twisting, lifting and shearing events. Uninformed, casual or sloppy tool weight allocation leads to neck, shoulder, back, hip and knee pain or MSD's (Muscular Skeletal Disorders).

## REEL SLABBER ACCESSORIES



Reel Slabber Holster – **Basic**



Reel Slabber Holster – **Plus**



Reel Slabber Holster – **Deluxe**



**DUCKBILL**  
USA

Crafted for Comfort. Designed for Duty. Built for You.